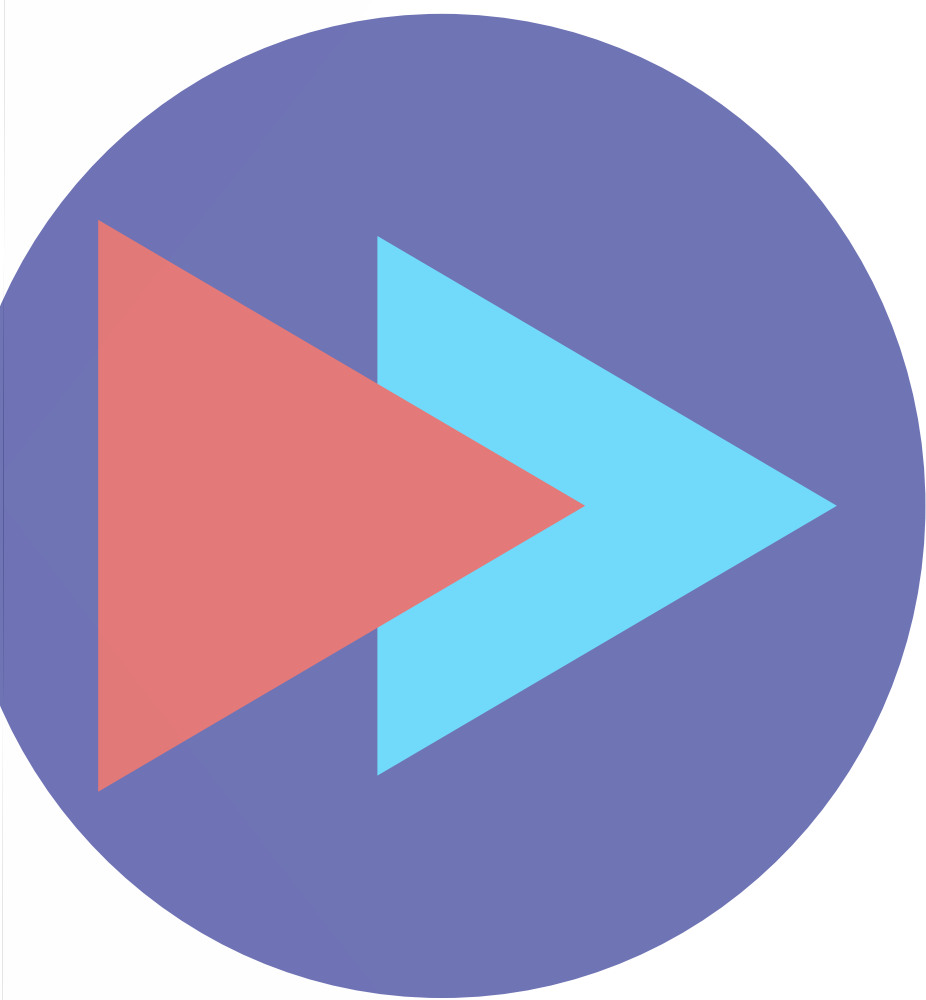




Turn on your wellness.



ATMOSPHERIC BURNER  
SEALED CHAMBER BOILERS





IVY FAMILY

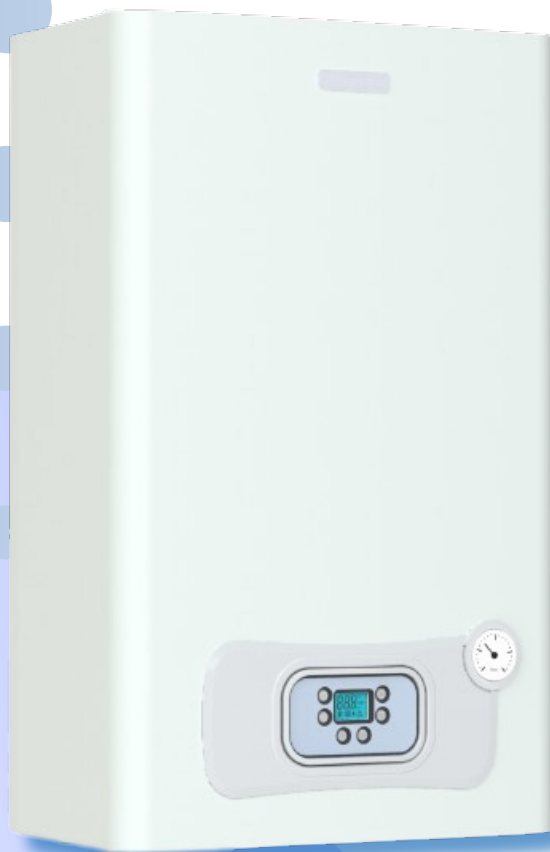
## IVY G6.3 BOILER

**IVY G6.3 and IVY G6.3 ECO** monothermal boilers enable a simple and safety installation for a perfect domestic comfort.

Adaptability without wastes, everything is guaranteed by the different power models of the range; top level performances, intelligent control of the functions by an intuitive and engaging display. Ergonomic and suitable for all the rooms thanks to a simple and elegant design, **IVY G6.3 Monothermal boilers** are a reference point for who wants to satisfy without being satisfied with little.



IVY G6.3



IVY G6.3 ECO

## WHY INSTALLING A MONOTHERMAL IVY G6.3 BOILER

Our experience and habit in searching always real solutions, enabled us to create with success appliances designed to make our life easy and comfortable.

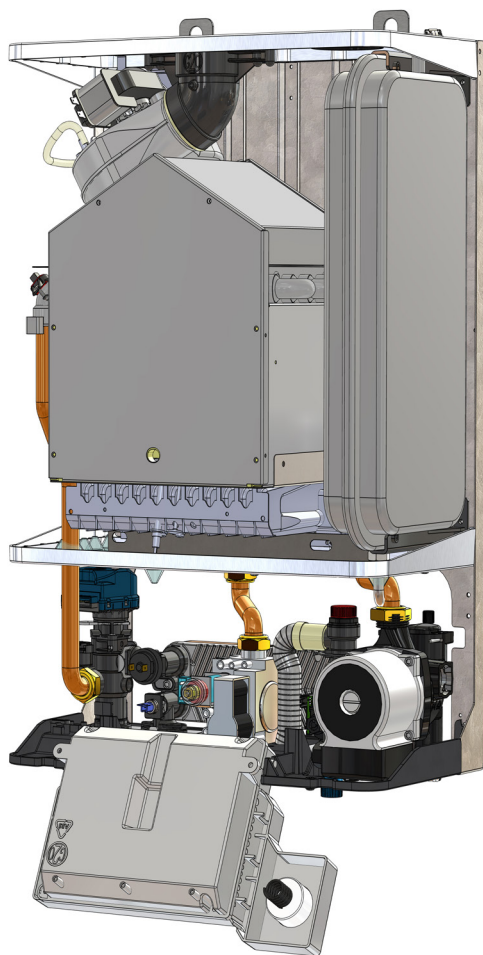
Thinking in this way, we projected, developed and produced a boiler that can completely satisfy domestic heating needs and sanitary hot water production in a simple but valid way; we won this challenge thanks to the use of essential high-tech components.

**IVY G6.3 Monothermal boilers** are designed to make easy and satisfactory their use; they can be installed in every

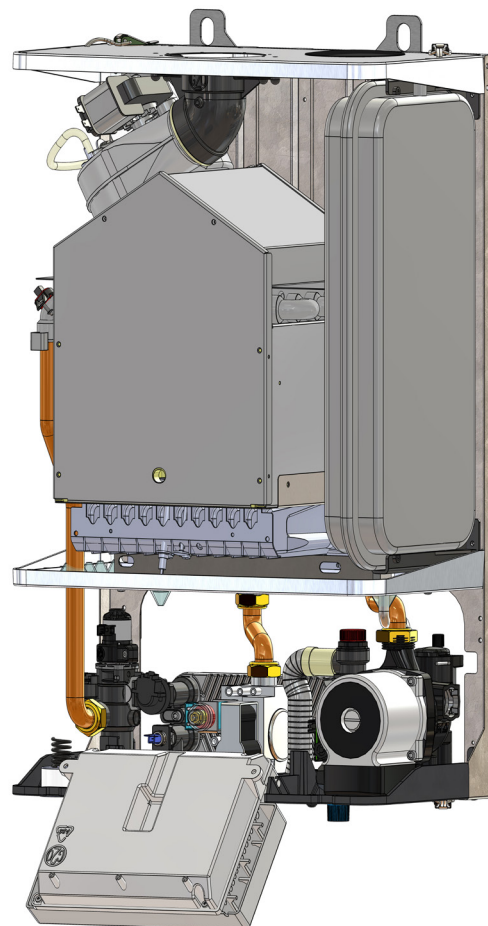
room without any particular requirement, they are simple to configure and to use; they fit perfectly with most of the domestic plants.

A range with different powers, control of sanitary tank, big production of instantaneous sanitary hot water according to more basic but efficient rules: all this remove any doubt.

With an elegant and discreet style, **IVY G6.3 Monothermal boilers** are designed to not invade "your space"; all is included in a sober and elegant boiler, with very small dimensions; a discreet presence that make more comfortable your time.



IVY G6.3 ECO



IVY G6.3

## ■ EFFICIENCY

Its unique and exclusive technology allows excellent performances in terms of energy efficiency.



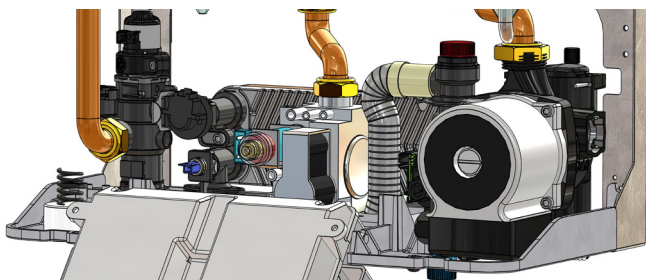
Electronic control panel, elegant and efficient for IVY G6.3

Smart and dynamic control panel for IVY G6.3 ECO.



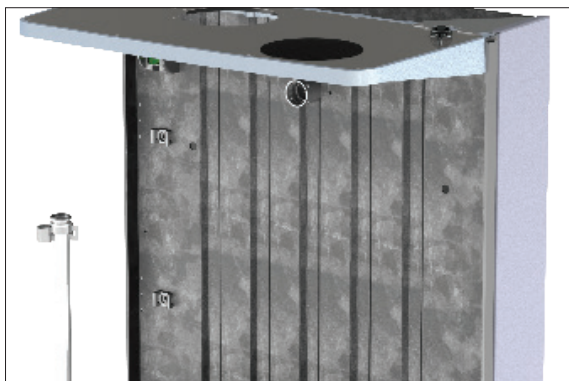
IVY Monothermal boiler is suitable for using a remote control to check over functions and efficiency, warning faults. Also it works as a weekly programmer.





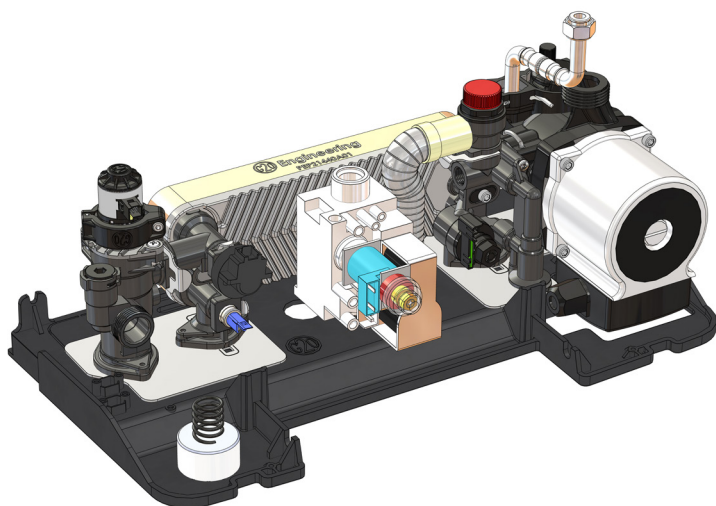
Total access to all components, “no keys” solutions at the most difficult points.

New concept boiler frame with non invasive but necessary supports.



Expansion vessel for heating system with high capacity only for 28 - 32 kW.

Atmospheric multi blade burner made in special steel, with big space to “burn” in the best way.



Exclusive Hydroblock specially designed, visible and accessible in a very small place.

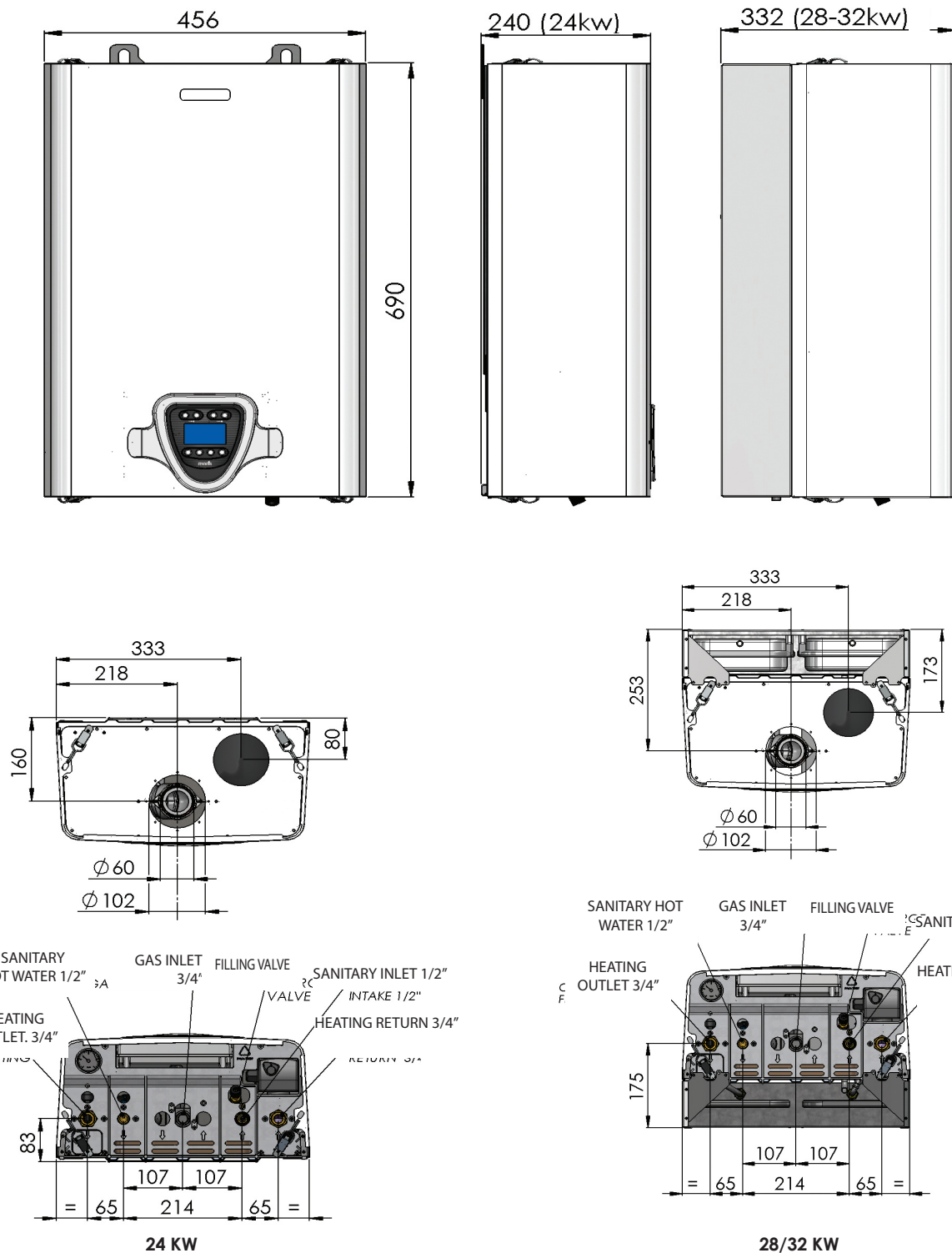
## TECHNICAL DATA C.H + D.H.W “MR” VERSION:

TECHNICAL DATA	U. M.	IVY G6.3 24 MR	IVY G6.3 28 MR	IVY G6.3 32 MR
Category		II2H3+	II2H3+	II2H3+
NOx Class		3	3	3
Type		B22p/C12/C32/C42/C52/C62	B22p/C12/C32/C42/C52/C62	B22p/C12/C32/C42/C52/C62
Reference gas		G20 G30/31	G20 G31	G20 G31
Max. Nominal Load	kW	26	30,5	34,2
Min. Nominal Load	kW	9	11,4	13
Max. Power	kW	24,1	28,4	31,9
Min. Power	kW	8	9,9	11
Efficiency	%	92,7	93,1	93,2
Part. Load 30% Pn	%	91	90,8	90,6
Fume T. net G20 room T. 20°	°C	128	125	127
Gas consumption	G20 m³/h	2,8	3,27	3,6
	G30/31kg/h	2,1	2,4	2,9
Heating water temperature	°C	27-80	27-80	27-80
Expansion vessel capacity	l	6	6+6	6+6
Expansion vessel pressure	bar	1	1	1
Min/Max. heating pressure	bar	0,8-3,0	0,8-3,0	0,8-3,0
Pump thrust	m.c.a.	5	6	6,5
Domestic hot water flow rate ΔT 25°C	l/min	13,5	14,5	16,6
Domestic hot water flow rate ΔT 35°C	l/min	9,85	12,5	13
Domestic hot water pressure max.	bar	10	10	10
Domestic hot water pressure min.	bar	0,5	0,5	0,5
Domestic hot water temp. Min./Max.	°C	30-60	30-60	30-60
Electricity supply	V/Hz	250/50	250/50	250/50
Power consumption	W	152	152	152
Protection grade of electric system	IP	X4D	X4D	X4D
Weight	Kg	30	37	39



## TECHNICAL DATA C.H “MN” VERSION:

TECHNICAL DATA	U. M.	IVY G6.3 24 MN	IVY G6.3 28 MN	IVY G6.3 32 MN
Category		II2H3+	II2H3+	II2H3+
NOx Class		3	3	3
Type		B22p/C12/C32/ C42/C52/C62	B22p/C12/C32/ C42/C52/C62	B22p/C12/C32/ C42/C52/C62
Reference gas		G20 G30/31	G20 G31	G20 G31
Max. Nominal Load	kW	26	30,5	34,2
Min. Nominal Load	kW	9	11,4	13
Max. Power	kW	24,1	28,4	31,9
Min. Power	kW	8	9,9	11
Efficiency	%	92,7	93,1	93,2
Part. Load 30% Pn	%	91	90,8	90,6
Fume T. net G20 room T. 20°	°C	128	125	127
Gas consumption	G20 m³/h	2,8	3,27	3,6
	G30/31kg/h	2,1	2,4	2,9
Heating water temperature	°C	27-80	27-80	27-80
Expansion vessel capacity	l	6	6+6	6+6
Expansion vessel pressure	bar	1	1	1
Min/Max. heating pressure	bar	0,8-3,0	0,8-3,0	0,8-3,0
Pump thrust	m.c.a.	5	6	6,5
Electricity supply	V/Hz	250/50	250/50	250/50
Power consumption	W	152	152	152
Protection grade of electric system	IP	X4D	X4D	X4D
Weight	Kg	30	37	39



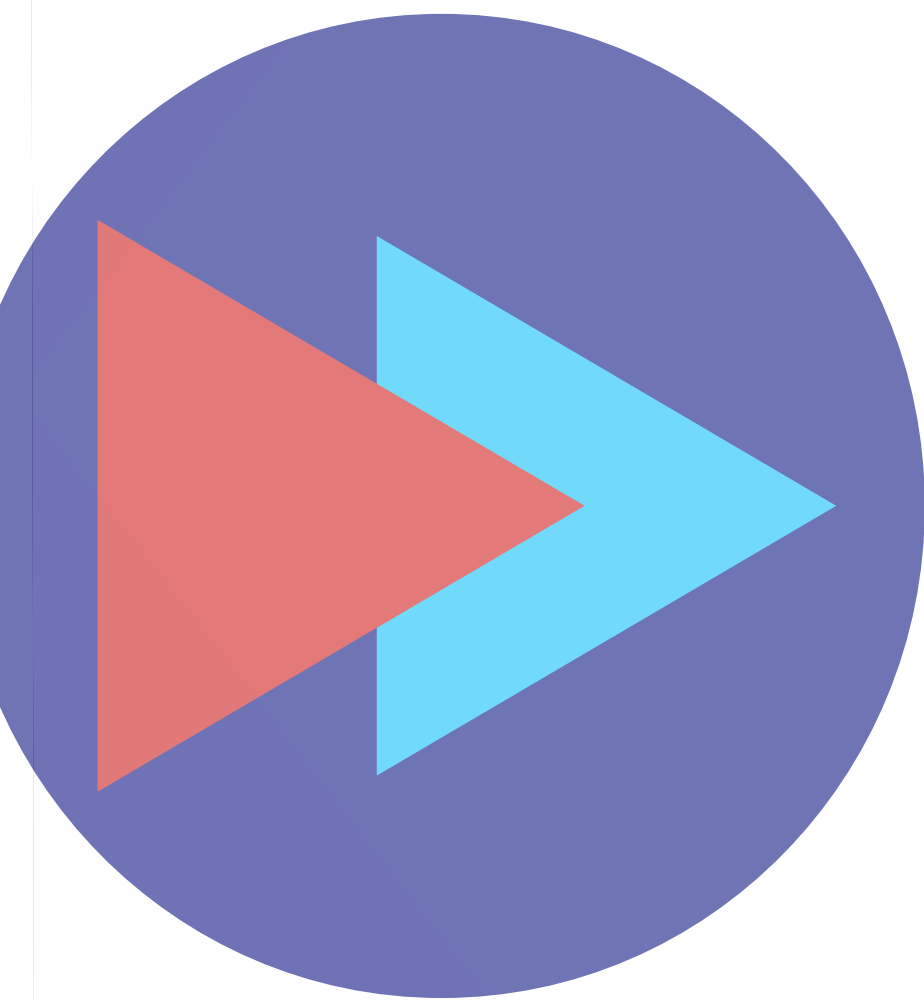
## OPTIONALS

- Concentric kit 60/100 CE approved with inspection L=760mm
- Aluminum parallel pipe starting kit 80/80
- Concentric vertical adapter
- External probe NTC 10K Connections kit
- Remote control
- 3 way valve kit 1" for indirect tank including NTC probe

## STANDARD EQUIPMENT

- Wall carton template





**Gruppo Imar<sup>®</sup>**

Operational headquarters: Loc. Campogrande 13, 29013 CARPANETO PIACENTINO(PC), Italy  
phone +39 0523 850513 - [info@kleinekessel.com](mailto:info@kleinekessel.com) - [www.produzionecaldaie.com](http://www.produzionecaldaie.com)